



How to Configure Indoor Station Alarm Output

Title:	How to Configure Indoor Station Alarm Output	Version:	v1.0	Date:	03/22/2021
Product:	Video Intercom			Page:	1 of 5

Preparation

1. Second generation indoor station(take DS-KH8520-WTE1 for example in this document)
2. iVMS-4200 V3.5.0.7 or later

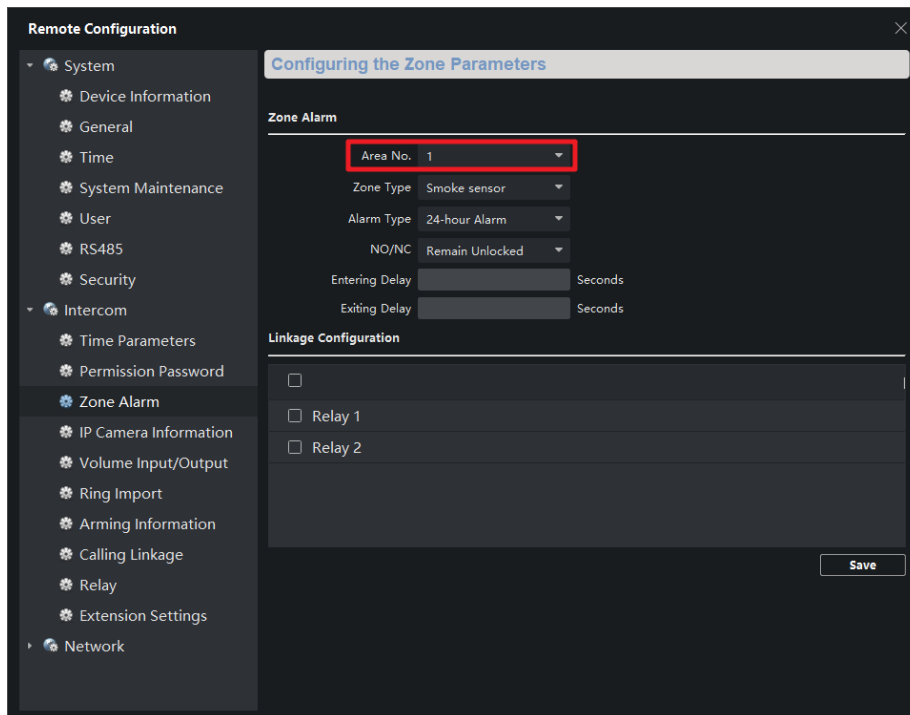
How to Configure Indoor Station Alarm Output

There are two ways to trigger alarm output of indoor station:

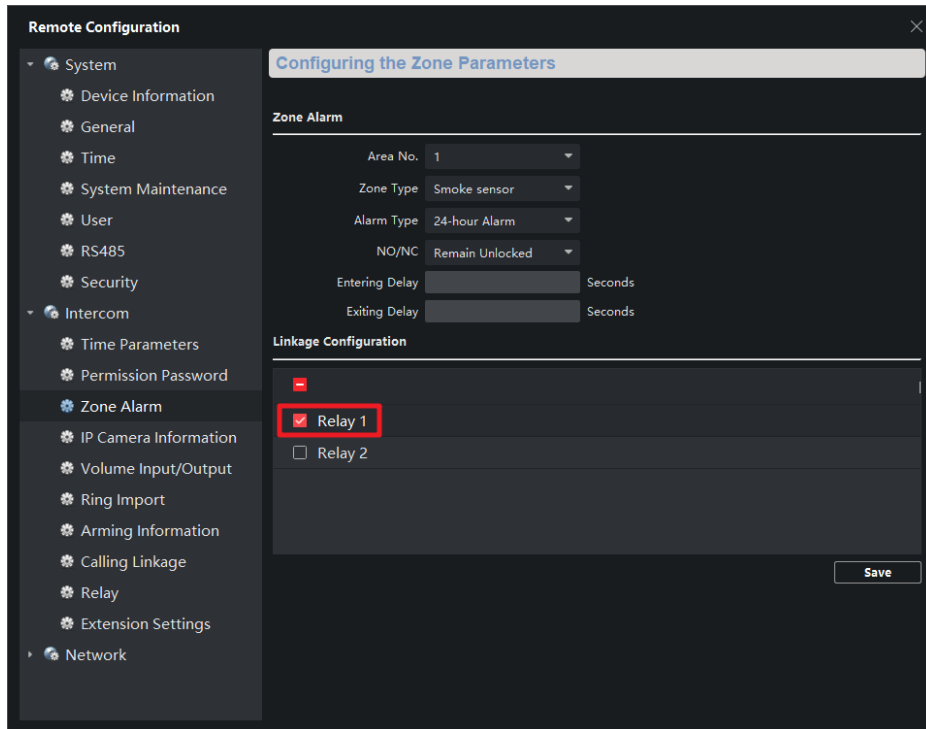
1. Zone alarm :when zone alarm is detected, it will trigger alarm output of indoor station
2. Calling linkage: when door station or other indoor station calls indoor station, it will trigger alarm output

1. Zone alarm

- 1) Go to Remote Configuration-Intercom-Zone alarm, choose Area No. you pay attention to, set alarm type and other parameters

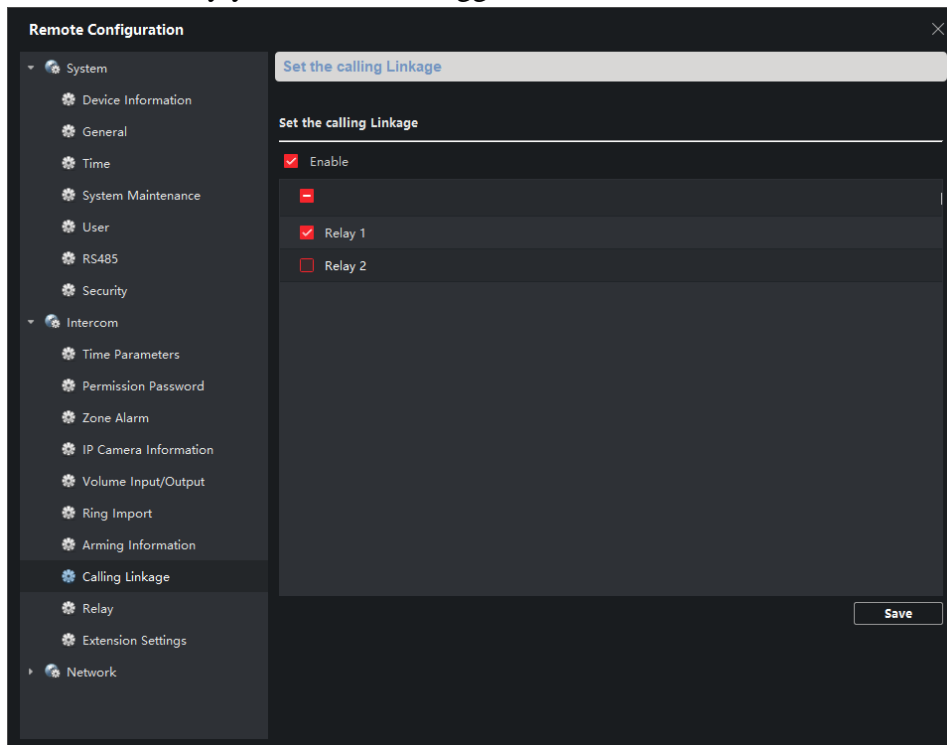


- 2) Choose the relay you want to trigger when zone alarm is detected and save



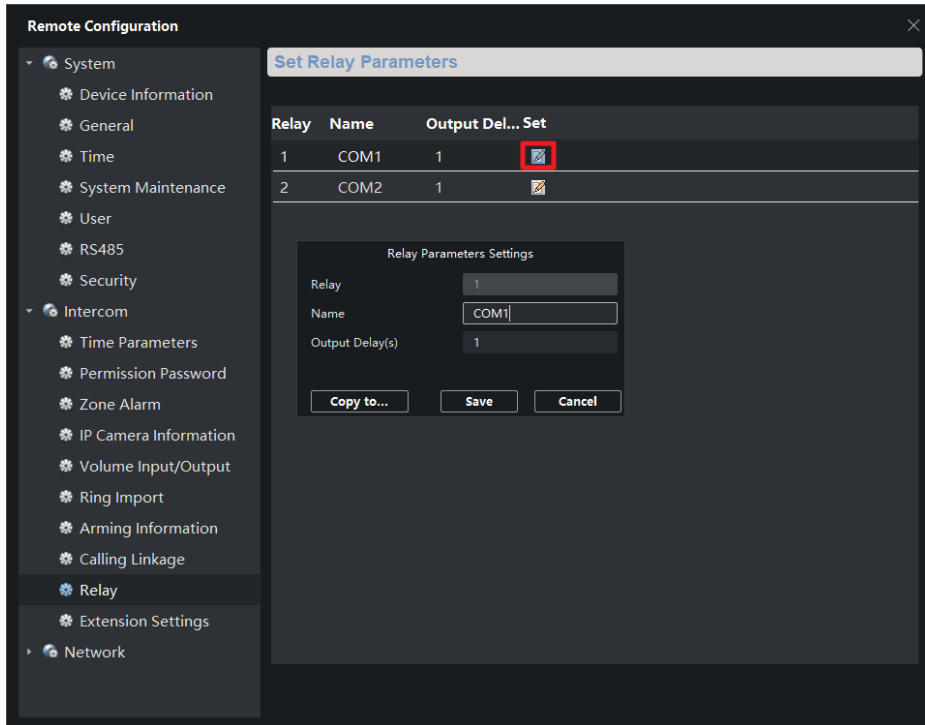
2. Calling linkage

- 1) Go to Remote configuration-Intercom-Calling Linkage, enable this function and choose the relay you want to be triggered when indoor station receive call



3. Configure relay settings

- 1) Go to Remote configuration-Intercom-Relay, choose the relay, edit name and active time of this alarm output. Output Delay is active time after alarm output is triggered





See Far, Go Further