

## PRODUCT SHOWCASE



**DS-K1T671M**  
MinMoe Face Recognition Terminal

- 7-inch LCD screen
- Multiple authentication methods: card / fingerprinter / face



**iDS-2VS445-F835H-MEY**  
Illegal Parking Camera

- 4 MP resolution
- Illegal parking / reverse driving / over lane line / illegal lane change / U-turning detection



**iDS-TCS402-B/CS/16**  
Speed Measurement Camera

- Speed detection (0-120 km/h)
- 3 lane coverage (ANPR & speed measurement)
- License plate / vehicle features (vehicle type & color, no-plate vehicle capture, moving direction detection, etc.) recognition



**AE-VC224T-IT**  
BSD (Blind Spot Detection) Camera

- Min. illumination: 0.1 Lux @ (F1.2, AGC ON), 0 Lux with IR
- Progressive scan CMOS to prevent motion image aliasing
- Cover the blind spot and display on the monitor and detection can trigger audio warning



**AE-VC154T-IT**  
DBA (Driver Behavior Analysis) Camera

- 0.1 lux @ (F1.2, AGC ON), 0 lux with IR
- Dangerous behaviors (fatigue driving, smoking, making phone calls, etc.) detection



**AE-VC155T**  
ADAS (Advanced Driver Assistance System) Camera

- Forward collision / pedestrian collision detection
- Supports auto electronic shutter / auto gain control



**iDS-2CD7A46G0/P-IZHSY**  
Dock Camera

- 4 MP resolution
- Dock occupation / driving in & out / rear door status / loading rate detection
- Supports ANPR and automatic LED light control



**DS-TCG405-E**  
ANPR Camera

- 1/3" progressive scan CMOS
- License plate / vehicle type / vehicle color / vehicle brand recognition
- Supports relay output to control vehicle barrier



**DS-2TD2628-10/QA**  
Security Thermal Camera

- 4 MP resolution
- Temperature exception alarm for fire prevention, -20°C to 150°C (-4°F to 302°F), ± 8°C (± 14.4°F)
- Vehicle / human classification



**AE-MW6600**  
Fuel Level Sensor

- Easy installation without damaging the oil tank
- No floating ball and other mechanical moving parts are required
- Ultra small electronic cabin suitable for narrow installation space



**AE-MW6300**  
Door Status Sensor

- No standby power supply, good air tightness and long service life
- High stability, high reliability and high consistency



**AE-MW6700**  
Temperature Sensor

- Sealed internally, waterproof, moisture-proof and rust proof
- Unique single bus interface without external components



**MV-VB2210-120G**  
Vision Box

- Supports multiple opto-isolated inputs and outputs
- Adopts 2 HDMI interfaces and supports independent display
- Light control via light interface



**MV-ID6089M-00C-NNG**  
Smart Code Reader

- Built-in code reading / deep learning algorithm to read different codes
- Supports RS-232 serial port and indicators displaying device status
- Multiple IO interfaces for inputting and outputting signals



**AE-MD5043**  
Mobile Video Recorder

- Access of 4 HD TVI cameras with up to 1080p resolution
- Precise positioning of the vehicle and recording of the location information via built-in GPS module
- Supports driver behavior analysis and collision detection



**DS-2CD6944G0-IHS**  
Panoramic Camera

- 180° splicing image to present all scenes that covered by the camera
- Water and dust resistant (IP67) and vandal proof (IK10)
- Supports smart human density counting and public behaviors analysis



**DS-2SF8C442MXS-DLW(14F1)**  
TandemVu Camera

- 24/7 colorful imaging
- 42 × optical zoom, 16 × digital zoom
- Expansive night view with up to 30 m white light distance and 300 m IR distance



**HikCentral Professional**

- A broad range of business needs covered by various applications
- Simple installation and maintenance by lightweight but powerful software
- Easy and convenient integration with open system architecture
- Personalized and optimized experience with user-centric design

**VISUALIZATION FOR SAFER, SMARTER LOGISTICS**  
HIKVISION LOGISTICS SOLUTION

# VISUALIZATION FOR SAFER, SMARTER LOGISTICS

Hikvision Logistics Solution

**HIKVISION**



**Headquarters**  
No.555 Qianmo Road, Binjiang District,  
Hangzhou 310051, China  
T +86-571-8807-5998  
overseasbusiness@hikvision.com

Distributed by

# Hikvision Logistics Solution

Logistics is a critical link in supply chain management for businesses around the world. Today's logistics operators are facing increasing challenges to maximize productivity and performance while reducing risks and costs.

As a leading global provider in IoT innovation, Hikvision helps logistics companies enhance overall security and optimize operations in all aspects with video-based and AI-driven technologies. In addition, we provide visualized dashboards, empowering operations and management with all-encompassing visibility.

## Function-based Solutions

to help logistics companies and operators meet specific challenges

### Vehicle tracking & monitoring 1

For logistics service providers delivering thousands of parcels every day, the top concerns revolve around timely, accurate, and comprehensive status updates of freight and trucks. Hikvision offers real-time vehicle GPS tracking and video monitoring with post-event video evidence for incidents or abnormal situations such as route deviation.

### Goods management & protection 1

With extensive IoT applications and assorted sensors including a door status sensor, temperature sensor, and fuel level sensor, Hikvision's solution greatly enhances property management and protection, making sure delivered goods are intact and not damaged and that trucks are not used for other purposes.

### Driver protection & assistance 1

Ensuring truck drivers' personnel safety and driving standards are among top concerns of logistics operators. Hikvision's intelligent ADAS system is able to identify potential dangers during transport and trigger audio warnings. The system precisely detects abnormal driving activities such as not wearing safety-belt, fatigued driving, smoking, and making phone calls while driving – enhancing overall driving security.

### Smart Warehouses

Enhancing efficiency and reducing risks

From improving comprehensive on-site security, enhancing park traffic management, and optimizing dock scheduling capabilities, to monitoring and documenting the condition and movement of goods, we have got you covered! The security and efficiency of loading docks, in-bound and inventory areas, sorting and parking areas, and more, are all under your control with our top-notch solutions installed.

### One-stop Line Haul

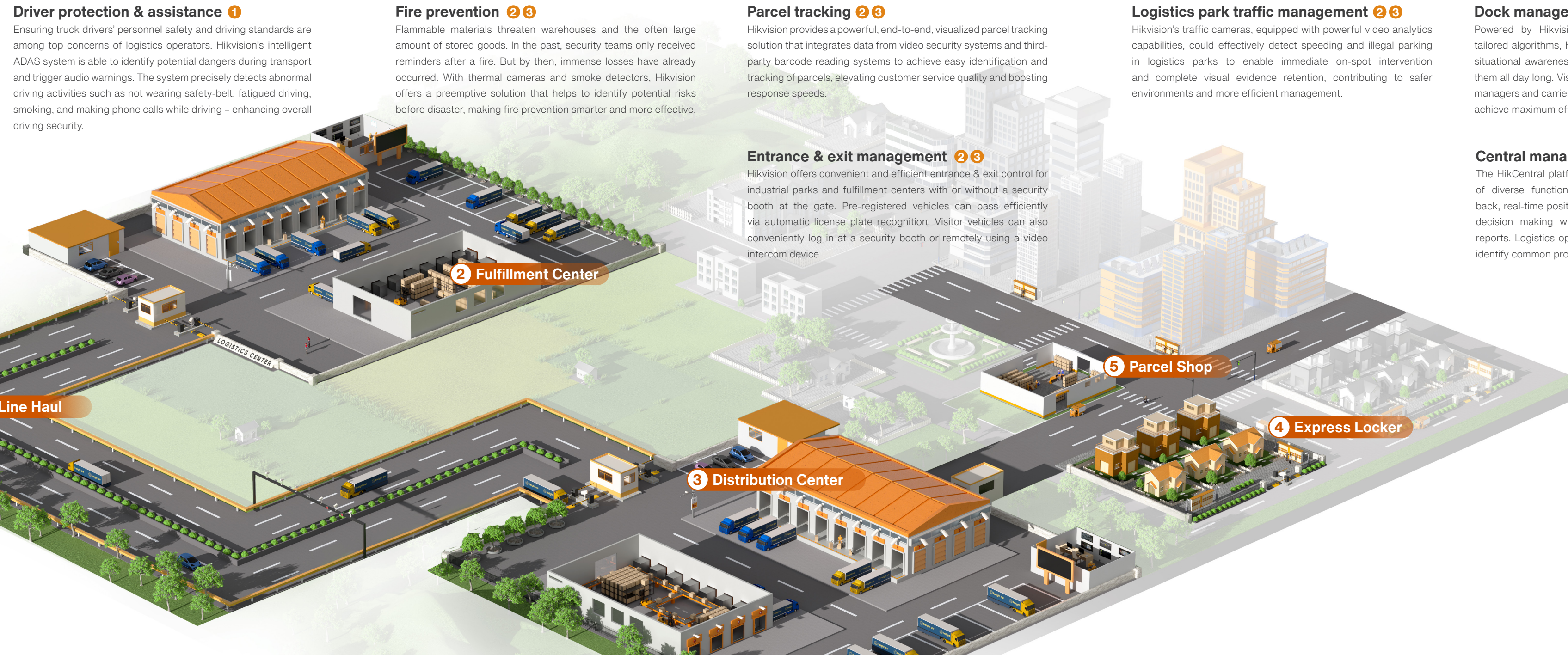
Boosting productivity and minimizing transportation hazards

Excessive traffic is a growing issue on road networks around the world. Hikvision helps traffic authorities optimize order on the roads, enhance traffic safety and efficiency, safeguard the legitimate rights and interests of law-abiding drivers, and automate traffic optimization with data analysis.

### Last Mile Delivery

Focusing on terminal logistics processes

To ensure secure and efficient delivery of parcels across every mile, Hikvision offers a video-based, easy-to-deploy system to help the parcel shop and parcel locker owners establish on-site security with real-time check-ins and timely event notifications. This way, they can better manage their property quickly, easily, and accurately.



### Fire prevention 2 3

Flammable materials threaten warehouses and the often large amount of stored goods. In the past, security teams only received reminders after a fire. But by then, immense losses have already occurred. With thermal cameras and smoke detectors, Hikvision offers a preemptive solution that helps to identify potential risks before disaster, making fire prevention smarter and more effective.

### Parcel tracking 2 3

Hikvision provides a powerful, end-to-end, visualized parcel tracking solution that integrates data from video security systems and third-party barcode reading systems to achieve easy identification and tracking of parcels, elevating customer service quality and boosting response speeds.

### Logistics park traffic management 2 3

Hikvision's traffic cameras, equipped with powerful video analytics capabilities, could effectively detect speeding and illegal parking in logistics parks to enable immediate on-spot intervention and complete visual evidence retention, contributing to safer environments and more efficient management.

### Entrance & exit management 2 3

Hikvision offers convenient and efficient entrance & exit control for industrial parks and fulfillment centers with or without a security booth at the gate. Pre-registered vehicles can pass efficiently via automatic license plate recognition. Visitor vehicles can also conveniently log in at a security booth or remotely using a video intercom device.

### Dock management 2 3

Powered by Hikvision's high-end intelligent dock camera with tailored algorithms, Hikvision's Dock Management Solution enables situational awareness of each dock and the goods going through them all day long. Visualized and quantified records help warehouse managers and carriers improve vehicle and resource allocations, and achieve maximum efficiency and minimal loss.

### Central management 1 2 3 4 5

The HikCentral platform from Hikvision centralizes the management of diverse functions including video monitoring, recording, play back, real-time positioning, data & statistics and more, and improves decision making with several performance & operation analysis reports. Logistics operators can better evaluate driver performance, identify common problems, and adjust routes and shifts accordingly.



Learn More about  
Hikvision's Logistics Solutions

## Intuitive Dashboard

All logistics data gets unified and centrally managed on the HikCentral platform. There are also a variety of reports to choose from, presenting logistics operators with high levels of visibility across every aspect of personnel, vehicle, and merchandise management, helping them reduce risks and boost efficiency to the utmost.

### 3D dashboard

With the 3D image of your logistics park at the center of the dashboard, you will see all operational data and activity in one place.

Whether you're looking for statistics on operations, security, or employee performance, this dashboard has it all!



### AR command center

This AR command center is an efficient tool for you to quickly access real-time video feeds in different areas – simply click on the tag to switch viewing window.



### Visualized dashboards

Visualized dashboards from Hikvision's centralized management software – the HikCentral platform – can generate analytic reports of personnel, vehicle and merchandise management, powered by intelligent cameras and diverse sensors, helping logistics managers better evaluate and improve operations in all aspects and make smarter decisions.

