



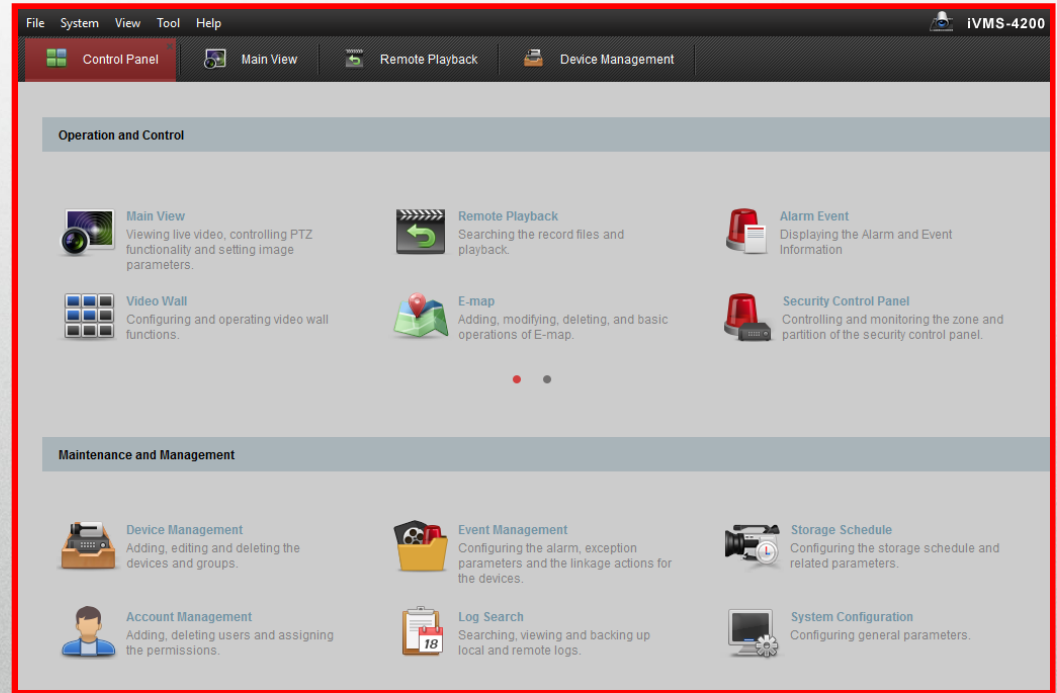
HIKVISION[®]

2017

**iVMS-4200 Part 3
Device Groups & Live View**

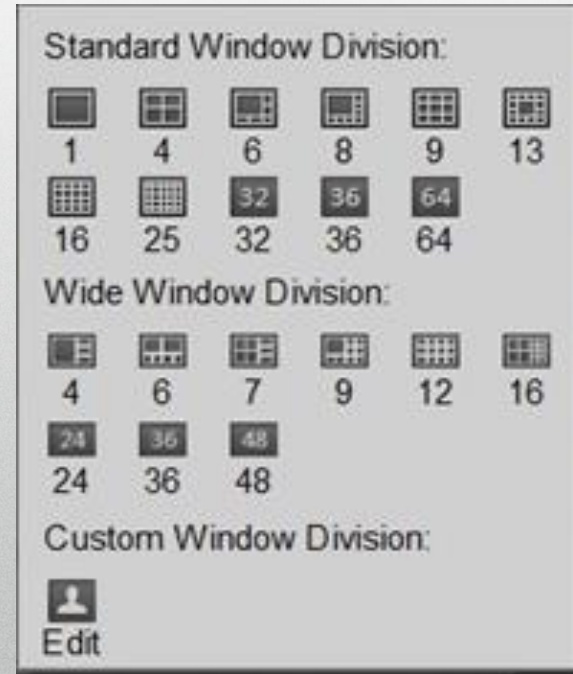
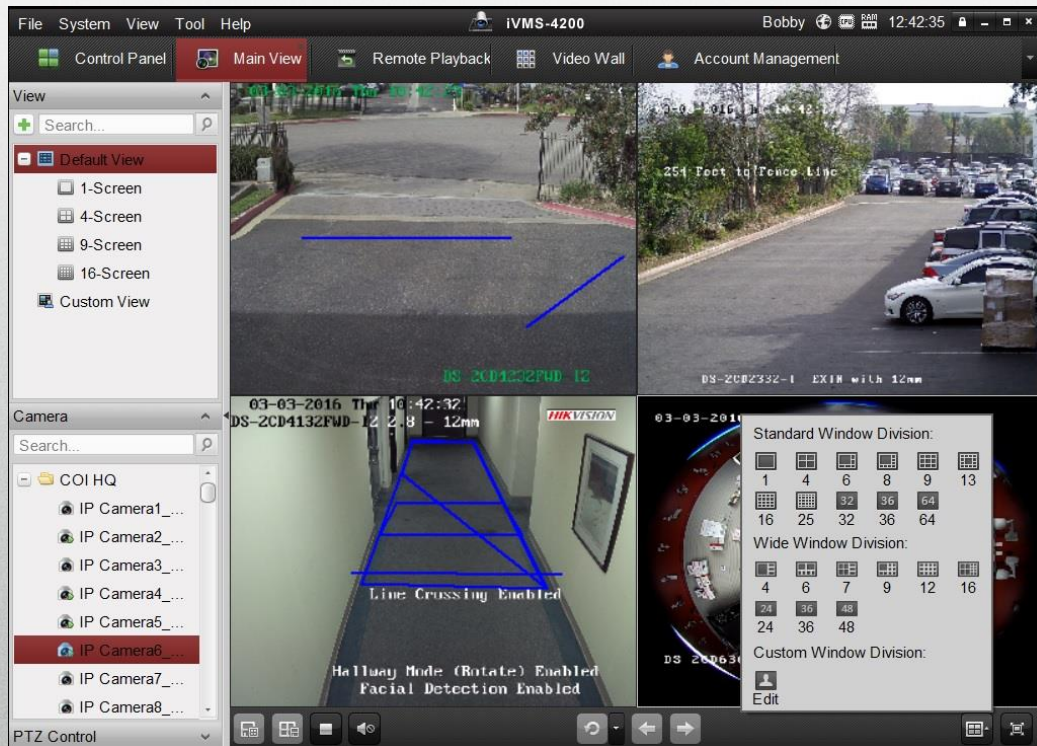
Main Dashboard Screen

- ***Control Panel*** screen
- Called “Dashboard”
- Shows icons for various sections



Live View

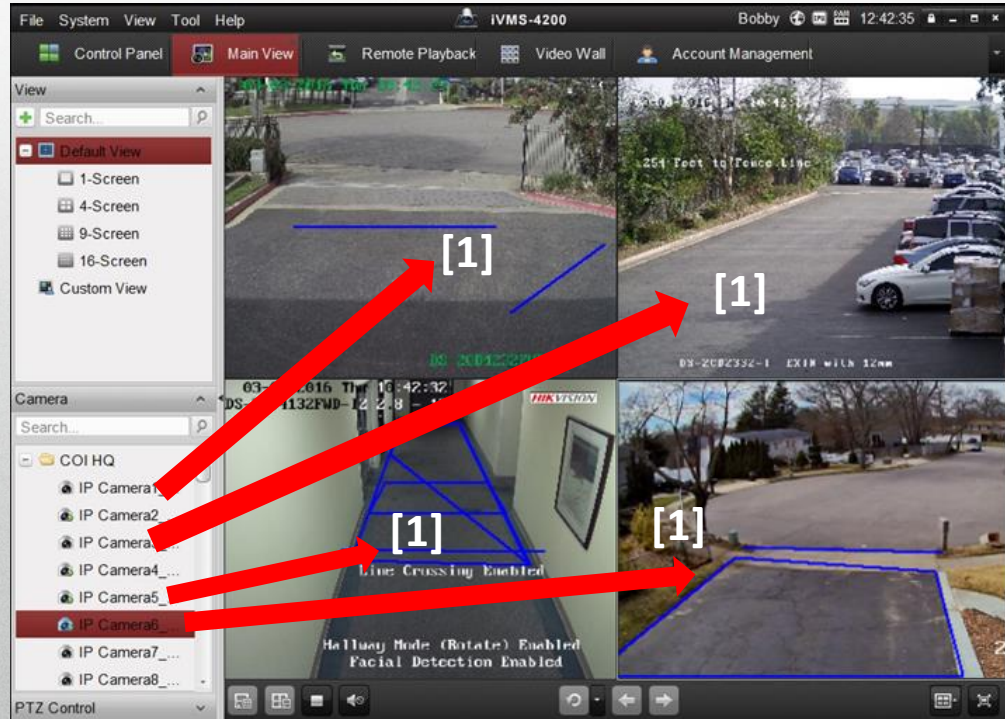
Live view can display 1 ~ 64 images at a time.



HIKVISION

Live View

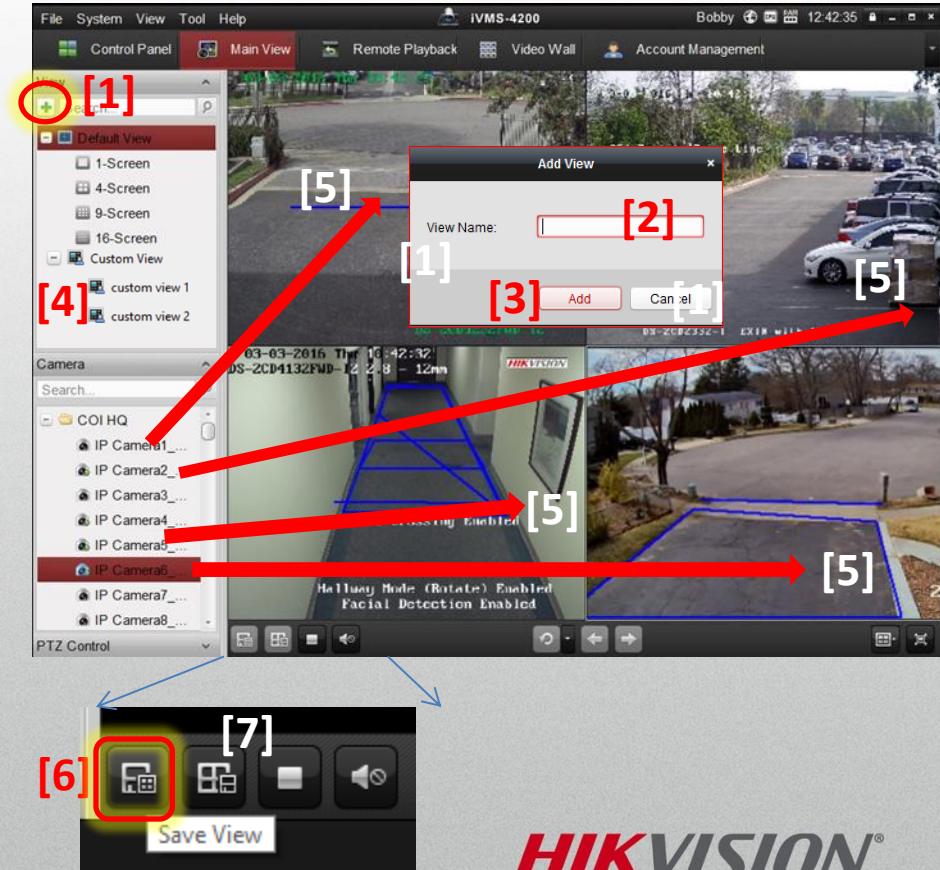
- Drag *individual cameras* into views [1]
- Next session, view repeats



HIKVISION

Custom Named Live View

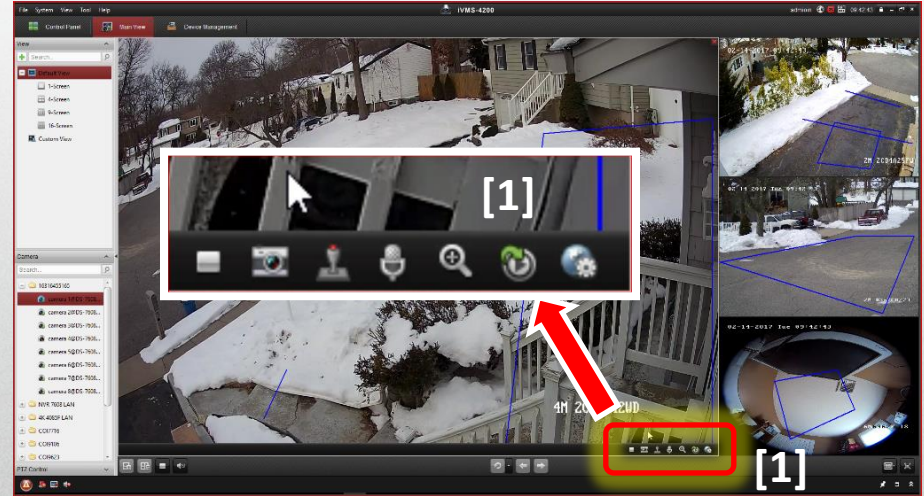
- Click “+” [1]
- In popup, Name [2] & Add [3] custom view [4]
- Drag camera(s) to screen [5] (not Groups)
- Click Save View [6] or click Save View As [7] (to create a new view with a new name)



HIKVISION

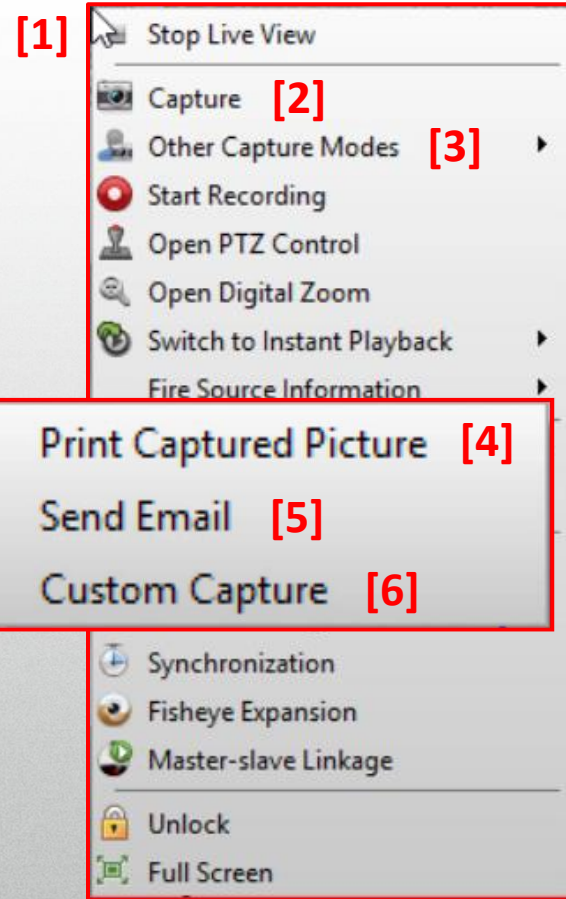
Window Toolbar

- Toolbar appears for selected or mouse-over window [1]
- Icons for Stop, Capture, PTZ, Two-way Audio, Digital Zoom, Instant Playback, Remote Configuration
- Customize toolbar icons in System Configuration



Right Click Menu

- Right click a live image for pop-up menu [1]
- **Capture** [2] stores snapshot
- **Other Capture Modes** [3]
 - **Print Captured Picture** [4] capture & print
 - **Send email** [5] capture & email image
 - Email address configured in “Settings” section of Main Menu
 - **Custom Capture** [6] easy user assigned file names for images



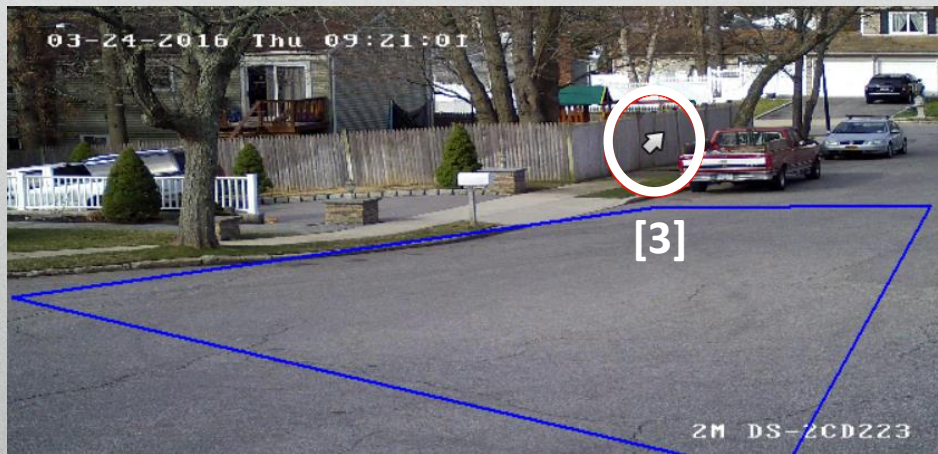
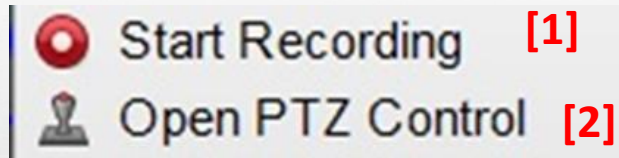
HIKVISION

Right Click Menu...

- **Start Recording** [1] selected camera

- To local hard drive
- Menu changes to **Stop Recording**

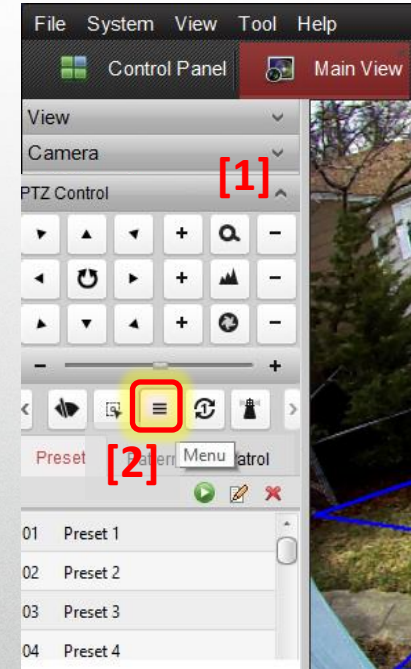
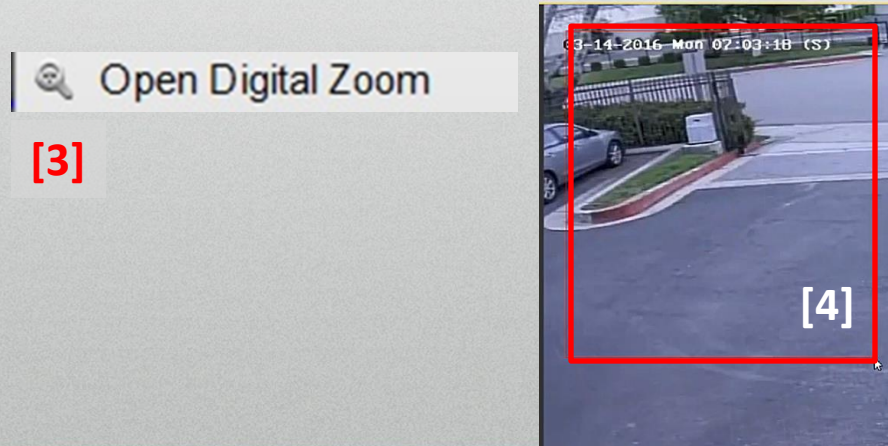
- **Open PTZ Control** [2] launches 3D PTZ control by mouse [3]



HIKVISION

PTZ Controls

- Expand the PTZ controls on the left [1] to
 - Operate PTZ cameras
 - Adjust motorized lens cameras
 - Access Turbo or PTZ Camera OSD menu [2]
- **Open Digital Zoom** [3] in right click menu will allow user to draw a box [4] on area of interest to zoom in.

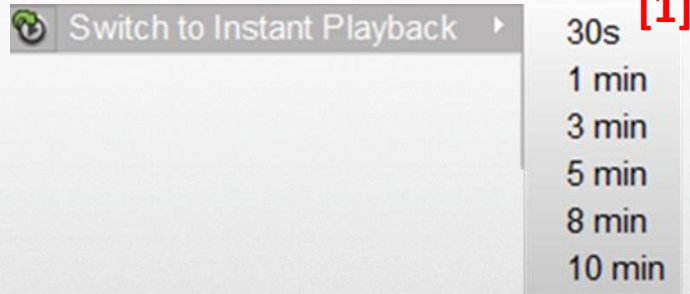


HIKVISION

Right Click Menu...

- **Switch to Instant Playback** [1]

- Pops up rewind submenu
- Applies to selected camera only
- Other cameras display live view



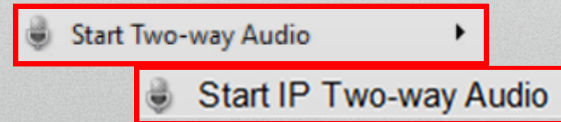
- **Audio Menus** displayed vary based on equipment features

- **Start Two-way Audio** [2] to recorder

- Links to audio I/O on back panel of recorder

- **Start IP Two-Way Audio** [3] to IP camera

- Links to audio I/O at CAMERA



Right Click Menu...

- **Enable Audio** [1] unmutes/mutes IPC audio
- **Camera Status** [2] shows record status & health
- **Remote Configuration** [3]
 - Configure recorders and *direct* cameras
 - Cameras attached to devices unavailable
- **Synchronization** [4] syncs to computer's time

