



HIKVISION®

2016

How to Create a Hik-Connect Account Using the iVMS-4200

HIKVISION

How to Create a Hik-Connect Account Using the iVMS-4200

- A Hik-Connect account is required in order to add a Hikvision device to the iVMS4200 using the Cloud P2P service.
- A Hik-Connect P2P device, is a device that is registered to dev.hik-connect.com using the Hik-Connect P2P service.
- The Hik-Connect P2P service must be enabled on the NVR, DVR or IP Camera first prior to adding to the iVMS4200 software.
- The Hik-Connect P2P account and the Hik-Cloud P2P account are the same accounts, just different names.

NOTE: Please see the how to enable the Hik-Connect P2P service guide for more information how to configure this service on a Hikvision device.

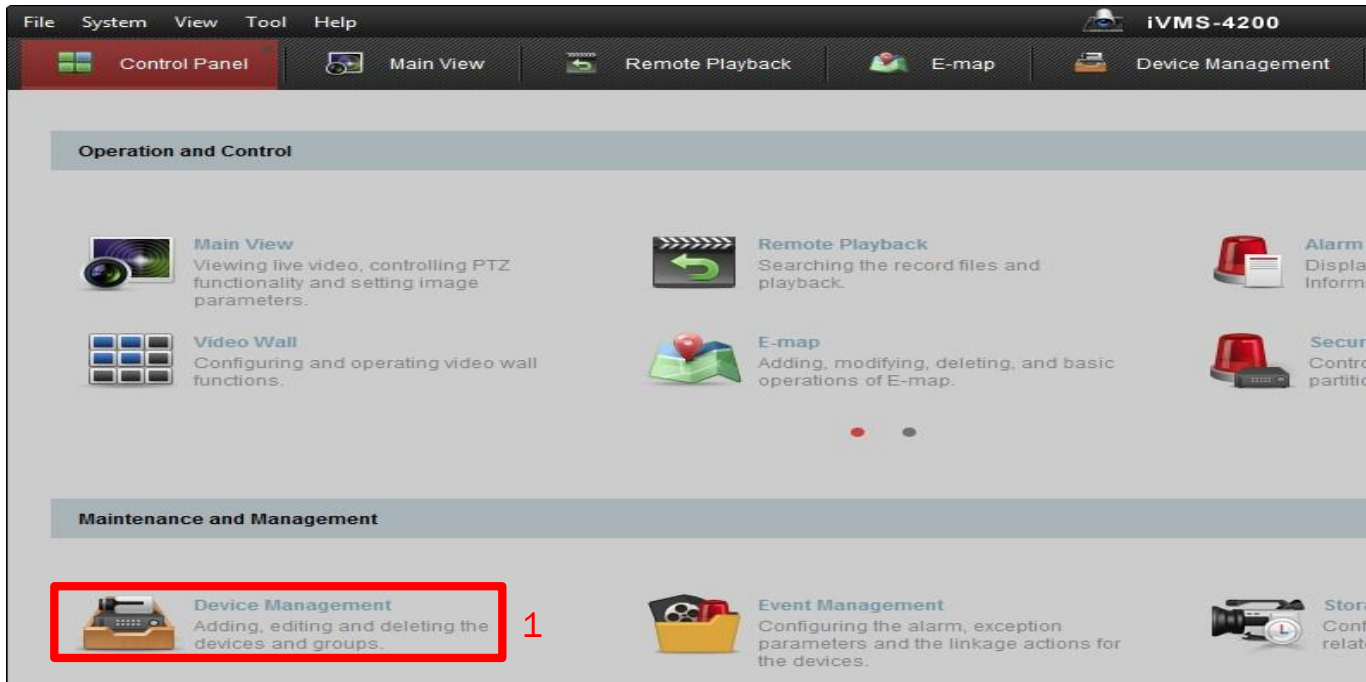
How to Create a Hik-Connect Account Using the iVMS-4200

- You will need to have the latest version of iVMS4200 software downloaded and installed on your PC.
- You can download from the <http://tech.hikvisionusa.com> or <http://www.hikvision.com> websites.
- You will need a valid email address and access to that email address for verification purposes.



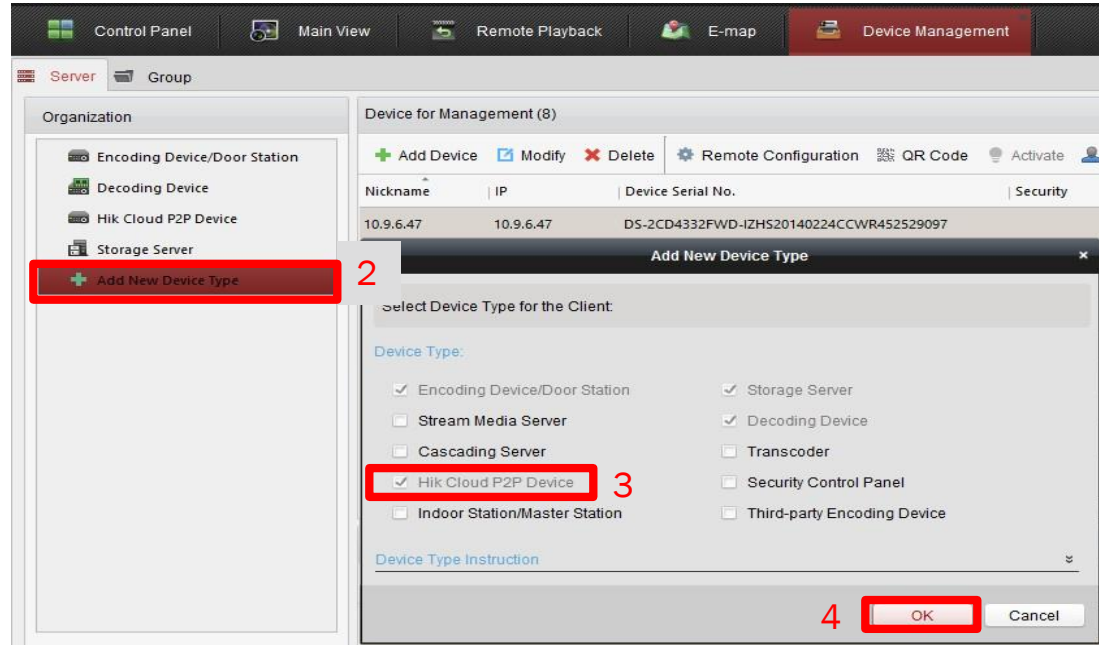
How to Create a Hik-Connect Account Using the iVMS-4200

- From the control panel of the iVMS4200 software click on “device management”^[1]



How to Create a Hik-Connect Account Using the iVMS-4200

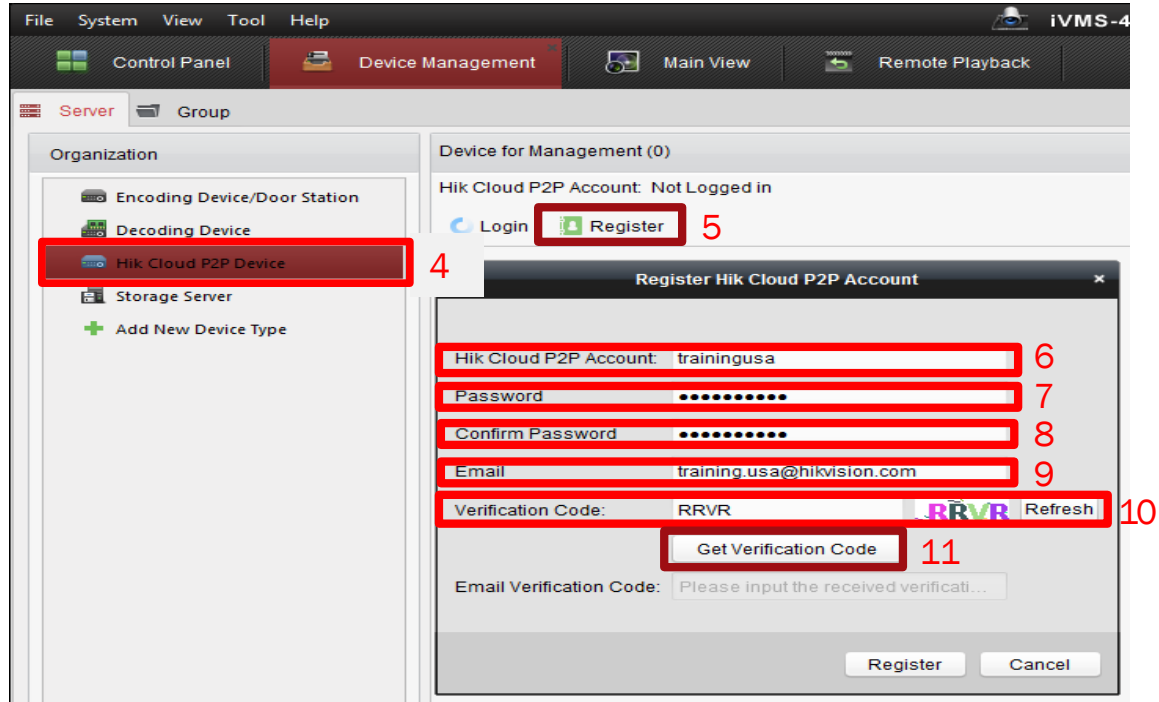
- Click on Add New Device Type [2] from the left menu.
- Place a check in the Hik-Cloud P2P device box. [3]
- Click OK [4]



NOTE: There are two tabs under the device management. The images above are from the server tab. The Organization area is all of your different device types.

How to Create a Hik-Connect Account Using the iVMS-4200

- Click on the Hik Cloud P2P Device [4] from the organization menu.
- Click on the Register Button. [5]
- Enter desired username. [6]
- Input a strong password [7]
- Confirm the strong password. [8]
- Enter a valid email address. [9]
- Input the Verification code [10] from the end of the field.
- Click on Get Verification Code [11].



How to Create a Hik-Connect Account Using the iVMS-4200

- A verification code [12] will be sent to the registered email account.
- Input the Verification Code [13] received via email into the Email Verification Code field.
- Click the Register button. [14]



How to Create a Hik-Connect Account Using the iVMS-4200

- A Login Hik Cloud P2P Account window ^[15] will appear when an account is created successfully.
- Input your new Hik-Connect account username and password to login and use the Hik-Cloud P2P service.

15

Login Hik Cloud P2P Account

Hik Cloud P2P Account:

Password: [Forgot Password](#)

A new group named after the account name will be created by default. You can also manually import the camera(s) on the Import interface

Login Cancel

NOTE: Please see the how to add a Hik-Connect P2P device you're the iVMS4200 software training document for more information on logging in and adding devices..